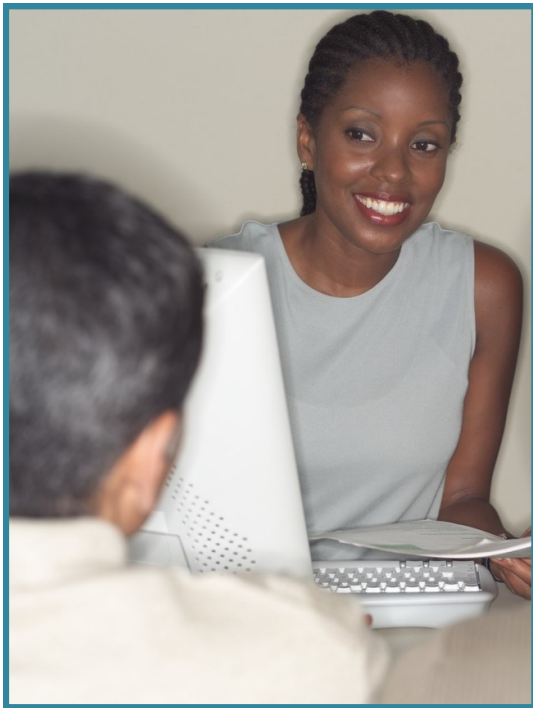


DISASTER RECOVERY SERVICES

AVAILABLE TO YOU

When disaster strikes an area, the services that assist the population can be affected. Know what resources are available to you so you can recover from the adverse circumstances you are facing.



Sign Up for Direct Deposit

All Social Security, veterans, or other federal beneficiaries are now required by law to sign up for direct deposit or a prepaid debit card to receive their benefits. If you have not already set up direct deposit or applied for a prepaid debit card, you can set it up now by calling 1 (800) 333-1795 or visiting:

- www.ssa.gov/deposit,
- www.fms.treas.gov/godirect, or
- your local bank or credit union.

Contact Your Bank or Credit Union

If you cannot work because of a disaster, contact your financial institution before you skip any mortgage or debt payments. See if they will:

- extend the terms of the loan,
- restructure your loans to consider your new circumstances, or
- allow some loan payments to be skipped without it affecting your credit.

Apply for Help with Repairs and Reconstruction

The Federal Emergency Management Agency (FEMA) has an Individual Assistance Program that helps fund disaster-related needs and expenses not covered by your insurance or other aid programs. They offer assistance with:

- working with your insurance company to ensure timely and fair compensation;
- home repairs that your insurance policy will not cover;
- food, clothing, and medical equipment; and
- rent and/or mortgage payments.

To see if you qualify, call 1(800) 621-FEMA(3362), or visit www.fema.gov.

Find a Shelter

If you need a place to stay after a disaster, locate the closest disaster recovery center by calling 1(800) 621-3362 or visiting www.fema.gov/disaster-recovery-centers.

Questions?

Dial 2-1-1 for answers to any questions you have about health and human services in your area, including:

- evacuation assistance,
- shelter locations,
- medical treatment locations, and
- relief aid (food, shelter, clothing, blankets, etc.).